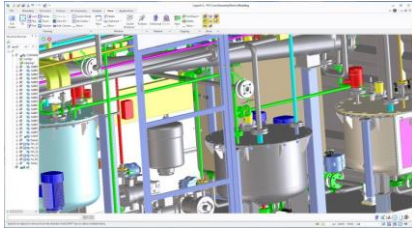


SpacePipe

SpacePipe is an easy-to-use 3D piping and plant design solution, which includes several standard piping elements and productivity tools for better and faster design. The familiar looking user interface combines ease of use and offers comprehensive piping routing functionality and powerful tools for dynamically creating piping components.



Product Features

Application Areas

- for drawing simple and complex piping systems for all engineering industries, including
 - Process
 - Pharmaceutical
 - Petrochemical
 - Nuclear
 - Building services

Supported Standards

- Both Metric and English (Imperial) units are supported.

Piping components

- The following standard piping components are included:
 - Pipes
 - Fittings
 - Flexible Hoses
 - Flanges
 - Elbows
 - Valves
 - Hangers
 - Clamps
 - Anchors
 - Pumps
 - Tee pieces
- Thousands of individual parts
- Fully editable for company needs
- Native Creo files

Import/Export

- Bidirectional interface to and from DXF/DWG, IGES, STEP, SAT, Creo Formats

3D Parts Management

- All data tables can be easily edited to your specifics
- Creation of catalogs for own components
- Integration with PDM Systems (Model Manager/Windchill)
- Automatic Creation of Bill-of-Materials

3D Parts to 2D Drawings

- Transfer of 3D Piping to 2D engineering drawings

Integration to downstream applications

- Direct integration with Pipe Stress Analysis program CAE PIPE through MBF format
- Connection to FEA and CAM programs

Ordering Information

SpacePipe Subscription	M560Z
SpacePipe License	M560L
SpacePipe Maintenance	M560Y

Prerequisites

Creo Elements/Direct Modeling
V17, 18, 19 or 20

System Requirements

Supported platforms:

- Windows10 32 and 64 bit TM
- Windows7 32 and 64 bit TM
- Windows8 32 and 64 bit TM

Delivery Information

Software download available through
SpacePipe web site

Supported languages:

- English
- German
- Russian
- Italian
- Turkish
- Japanese

For more information, please visit the
[website](#) of SpacePipe